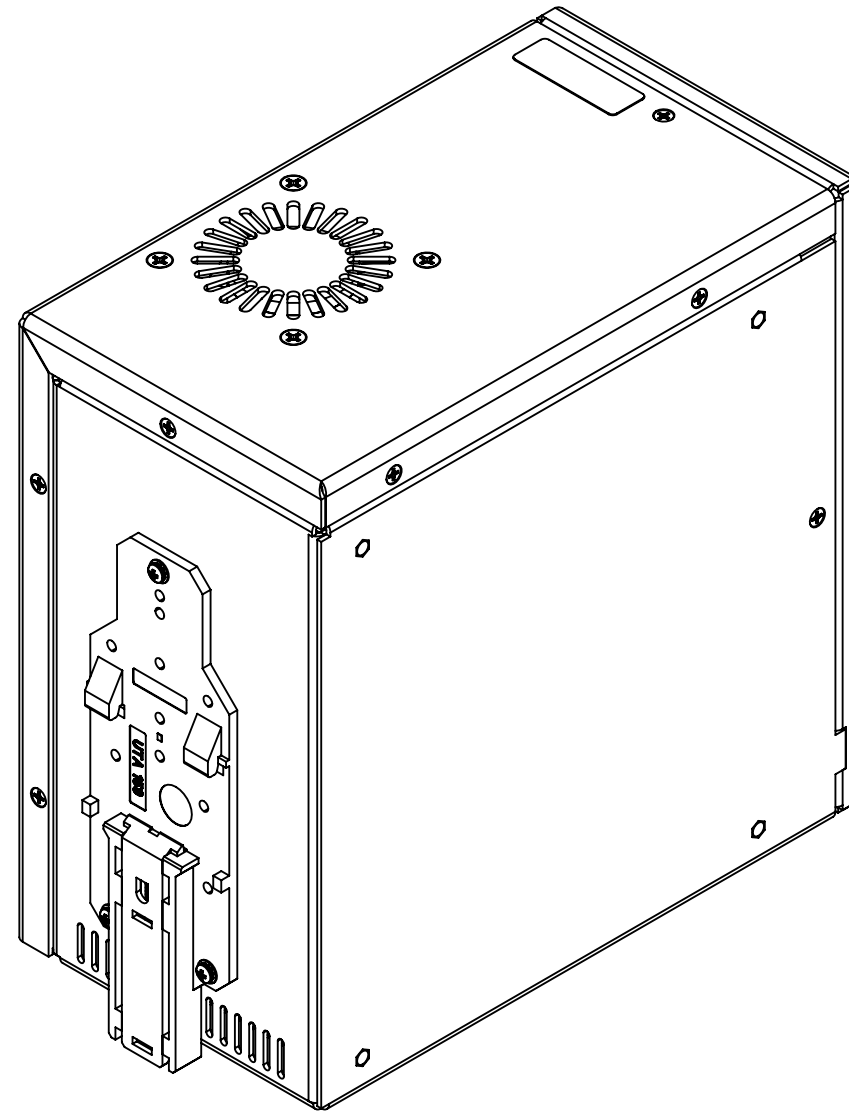
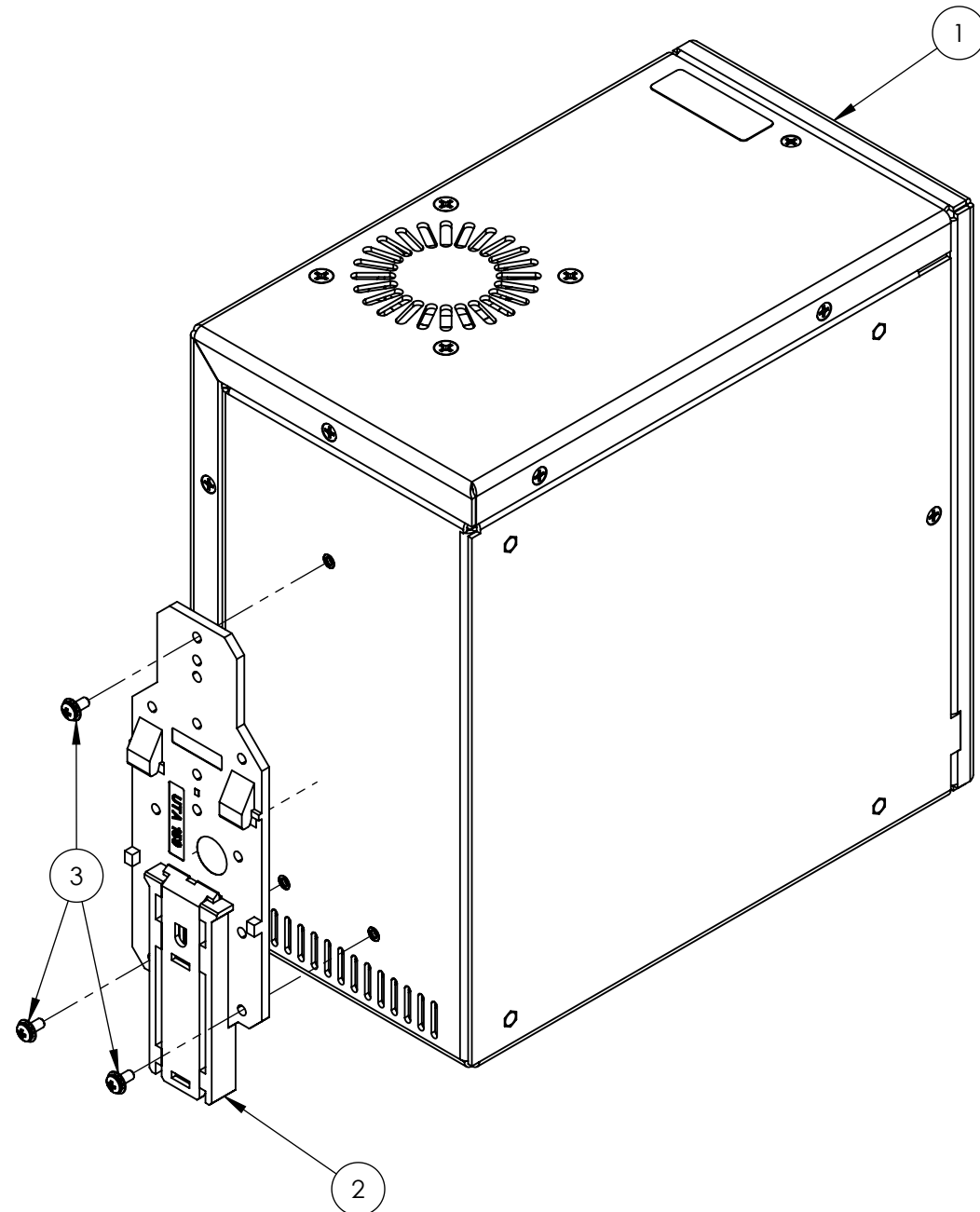


DIN BRACKET ASSEMBLY

| ITEM NO. | PART NUMBER | DESCRIPTION | QTY. |
|----------|-----------------|--------------------------------|------|
| 1 | 10500-1608-0000 | sigPOD 1608 | 1 |
| 2 | 6600000476 | UTA 159 - DIN rail adapter | 1 |
| 3 | 6120440014 | 4-40 x 1/4 PAN PHIL W/LOCKWSHR | 3 |



THIRD ANGLE PROJECTION



DIMENSIONS IN INCHES

INTERPRET DRAWING IN ACCORDANCE WITH ASME Y14.5M-1994

UNSPECIFIED TOLERANCES:

| FRACTIONS | DECIMALS | ANGLES |
|-----------|---------------|--------|
| ±1/32 | 0.X ± 0.050 | ± 1° |
| | 0.XX ± 0.010 | |
| | 0.XXX ± 0.005 | |

○ ITEM# △ REVISION ◻ FLAG NOTE

PROJECT CODE: 1608

REF. MODEL (REF): 10500-1608-0000 (1.00)

MODEL BY: agaikwad, 13-11-2025

DRAWN BY: agaikwad, 13-11-2025

CHECKED BY:

MATERIAL: MISC

FINISH: MISC

WEIGHT (lbs):



sciometric
Sciometric Instruments ULC

TITLE:

sigPOD 1608 DIN MOUNT ASSEMBLY

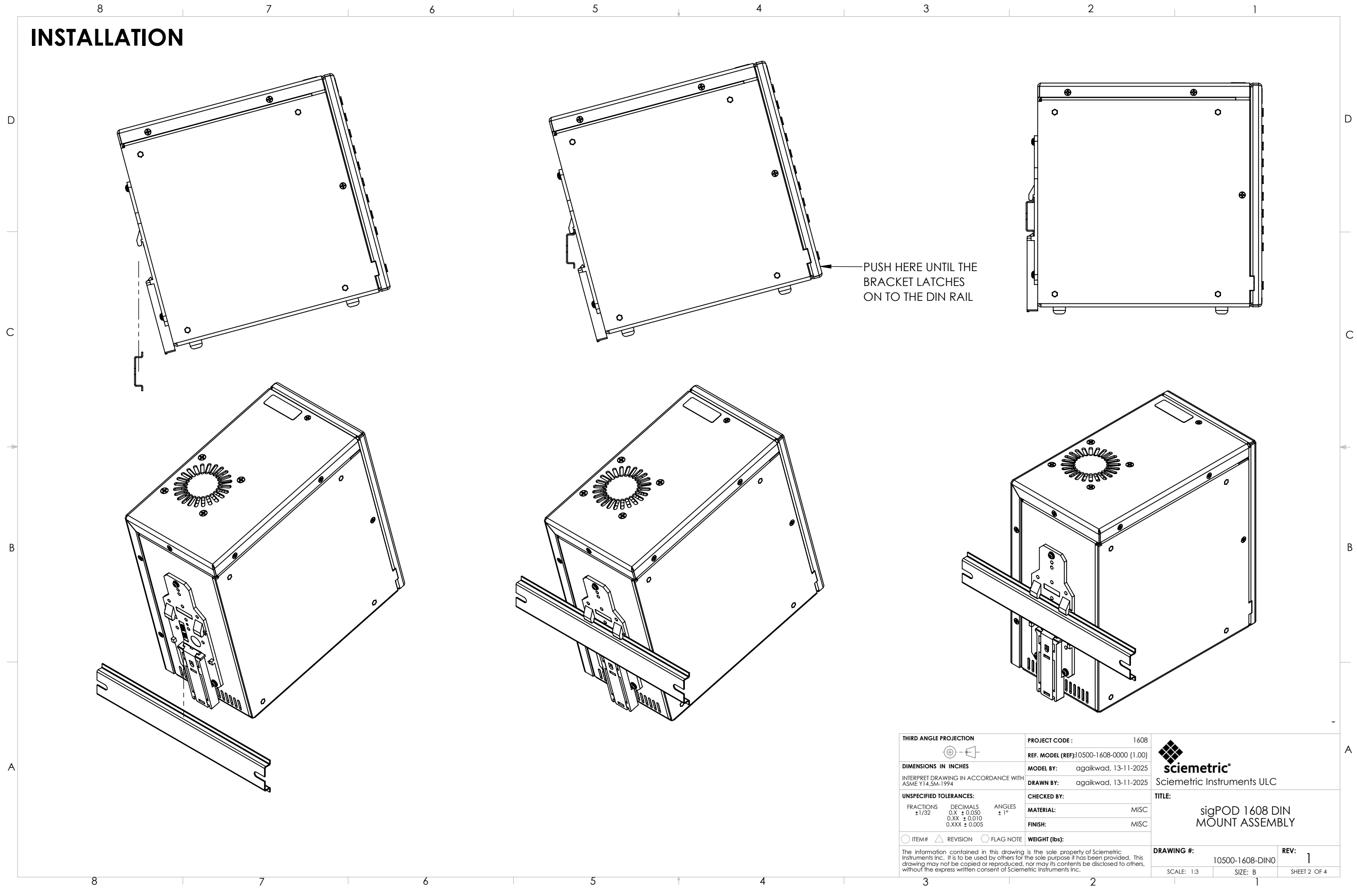
DRAWING #: 10500-1608-DINO

SCALE: 1:2 SIZE: B

REV: 1

SHEET 1 OF 4

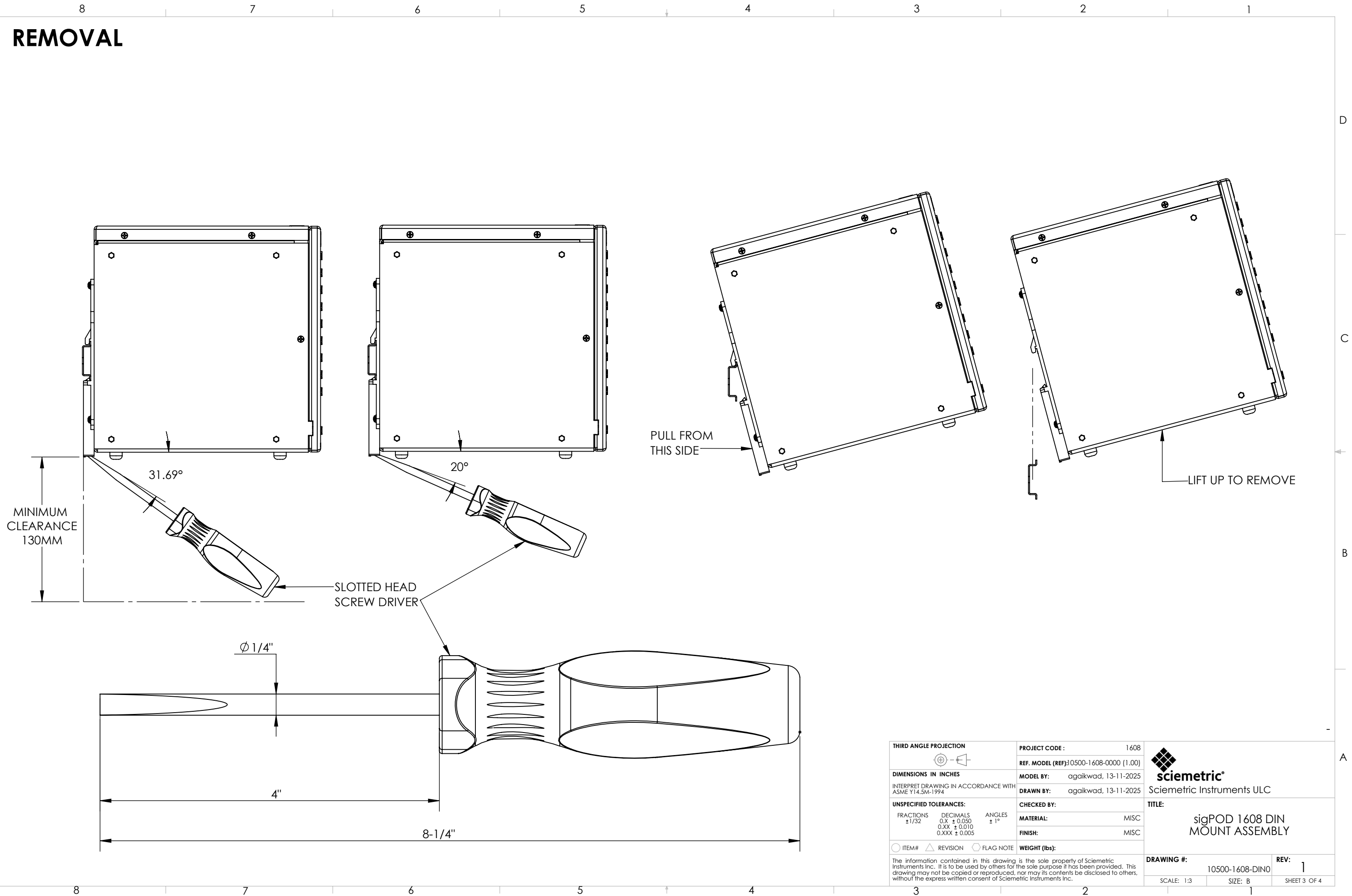
INSTALLATION



PUSH HERE UNTIL THE BRACKET LATCHES ON TO THE DIN RAIL

| | | | |
|---|--|--|--|
| THIRD ANGLE PROJECTION | | PROJECT CODE : 1608 REF. MODEL (REF): 10500-1608-0000 (1.00) | Sciometric Instruments ULC |
| DIMENSIONS IN INCHES INTERPRET DRAWING IN ACCORDANCE WITH ASME Y14.5M-1994 | | MODEL BY: agaikwad, 13-11-2025 DRAWN BY: agaikwad, 13-11-2025 | |
| UNSPECIFIED TOLERANCES: FRACTIONS ±1/32 DECIMALS 0.X ± 0.050 ANGLES ± 1° 0.XX ± 0.010 0.XXX ± 0.005 | | CHECKED BY: MATERIAL: MISC FINISH: MISC | TITLE: sigPOD 1608 DIN MOUNT ASSEMBLY |
| ○ ITEM# △ REVISION ◻ FLAG NOTE | | WEIGHT (lbs): | DRAWING #: 10500-1608-DINO SCALE: 1:3 SIZE: B |
| The information contained in this drawing is the sole property of Sciometric Instruments Inc. It is to be used by others for the sole purpose it has been provided. This drawing may not be copied or reproduced, nor may its contents be disclosed to others, without the express written consent of Sciometric Instruments Inc. | | REV: 1 SHEET 2 OF 4 | |

REMOVAL



MINIMUM CLEARANCE 130MM

31.69°

20°

PULL FROM THIS SIDE

LIFT UP TO REMOVE

SLOTTED HEAD SCREW DRIVER

Ø 1/4"

4"

8-1/4"

| | | | |
|--|--|--|---|
| THIRD ANGLE PROJECTION | | PROJECT CODE : 1608 REF. MODEL (REF): 10500-1608-0000 (1.00) | Sciometric Instruments ULC |
| DIMENSIONS IN INCHES INTERPRET DRAWING IN ACCORDANCE WITH ASME Y14.5M-1994 | | MODEL BY: agaikwad, 13-11-2025 DRAWN BY: agaikwad, 13-11-2025 | |
| UNSPECIFIED TOLERANCES: FRACTIONS ± 1/32 DECIMALS 0.X ± 0.050 ANGLES ± 1° 0.XX ± 0.010 0.XXX ± 0.005 | | CHECKED BY: MATERIAL: MISC FINISH: MISC | TITLE: sigPOD 1608 DIN MOUNT ASSEMBLY |
| ○ ITEM# △ REVISION ◻ FLAG NOTE | | WEIGHT (lbs): | DRAWING #: 10500-1608-DINO REV: 1 |
| | | SCALE: 1:3 SIZE: B SHEET 3 OF 4 | |

Sheet Template: B_size-IN-sciometric-SW DWG Sheet_R6.sldprt

