



# Model 3670

A TURNKEY LEAK TEST STATION



# Model 3670:

The new **Model 3670 Leak Test Station** enables manufacturers to implement Sciemetric's innovative 3520 Series leak test technology in a full turnkey solution. The 3670 can hold up to four 3520 Leak Test Modules, handling any of the leak test types supported by the 3520 Series including: pressure decay, flow, helium, vacuum, and more.

## General

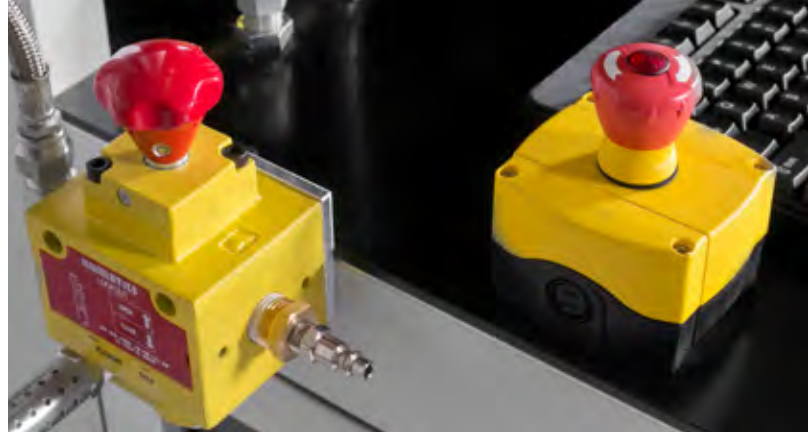
- **Dimensions (HxWxD):**
  - 2286 x 712 x 864 mm with stack light (2032 mm without stack light)
  - 90" x 28" x 34" with stack light (80" without stack light)
- **Construction:** Modular aluminum
- **Mobility:** Heavy duty industrial castors, two swivel and two straight
- **Fixed stand:** Adjustable single front foot lock
- **Operating temperature:** 5 to 40 °C
- **Operating humidity:** 8 to 90 %
- **Environmental:**
  - Monitor: IP65
  - Electrical Enclosure: IP52 (NEMA-12)
  - Pneumatic compartments: Cabinets open to air, components IP65
- **Finish:**
  - Electrical enclosure exterior - black (custom options available)
  - Electrical enclosure interior - white (custom options available)
  - Aluminum: Clear anodize
- **Weight:** Approx. 136 Kg (300 lbs)
- **Certifications:** CE, Nemko (consult factory for others)

## Power

- **Supply Voltage:** 220 VAC or 120 VAC single phase 50/60Hz (order option)
- **Input Current:** < 4.5 Amps, 5 amp circuit breaker
- **Connector:** 4 pin Harting
- **Cord:** 20 ft with Harting connector and plug
- **Switch:** Lockable main disconnect switch with manual override

## Air supply

- **Connector:** ½ NPT
- **Pressure Range:** 50 to 120 psig, min 20 psi above highest test pressure
- **Required Flow Capacity:** 35 SCFM ( 1000 SLPM) for one 3520, up to 100 SCFM (2800 SLPM) for more



- **Air Purity Class:** Standard: ISO 8573.1:2001 Class 3.4.2 or better
- **Air Dryness:** ≤ 3 °C Dew Point
- **Oil Concentration:** ≤ 0.1 mg/m3
- **Gas Compatibility:** Air

## Base Pneumatics

- **Accessibility:** Lockable, front and rear, clam shell design for optimum working room
- **Lockout:** Main lockable shutoff valve
- **Supply Valve:** Integrated electronic supply isolate/shutoff valve
- **Isolation tank:** 18 L (4.7 Gal) with automatic air discharge valves
- **Air filtration 1:** 5 micron particulate filter with removable water collector bottle
- **Air filtration 2:** 0.3 micron coalescing filter with removable water collector bottle
- **Input regulator:** Main regulator feeds isolation tank, 3520 pilot supply and 3520 pre-regulators
- **3520 Pre-regulators:** Precision regulator for each 3520 Series supply input
- **Number of 3520 Units:** Options for 1, 2, 3 or 4

## Electrical Control Panel

- **Internal Power rail:** 24 VDC
- **Network Connection:** for QualityWorX, remote data store and PLC connection
  - Internal: 2 Ethernet ports
  - External: 1 Ethernet port under quick access cover
- **Power Receptacle:** 1 external receptacle under quick access cover (Laptop use only)
- **Controller:** sigPOD 120x unit (priced separately)
- **Power conditioning:** Integrated 24 VDC UPS for brownout protection and safe shut down

# A Turnkey Leak Test Station

- **PLC Interface:**
  - Standard: manual operation only (PSV S/W installed)
  - Consult factory for automated station options, many fieldbuses available
- **Air circulation:** NEMA 12 fan and air intake with replaceable filter

## Operator Interface

- **Test status indicators:** 4 position stack light
  - Red: Part fail
  - Green: Part pass
  - Yellow: Test in progress
  - White: Fault/maintenance
- **Display:** 19" monitor with adjustable ergo bracket
- **Data Entry:** Touch screen, mouse and keyboard in ergonomic placement
- **Control Buttons:** Start test, E-stop
- **Part hose:** Hose, quick connects on the sides of the leak tester, hose suspension reels
- **Part connections:** Not included (consult factory)

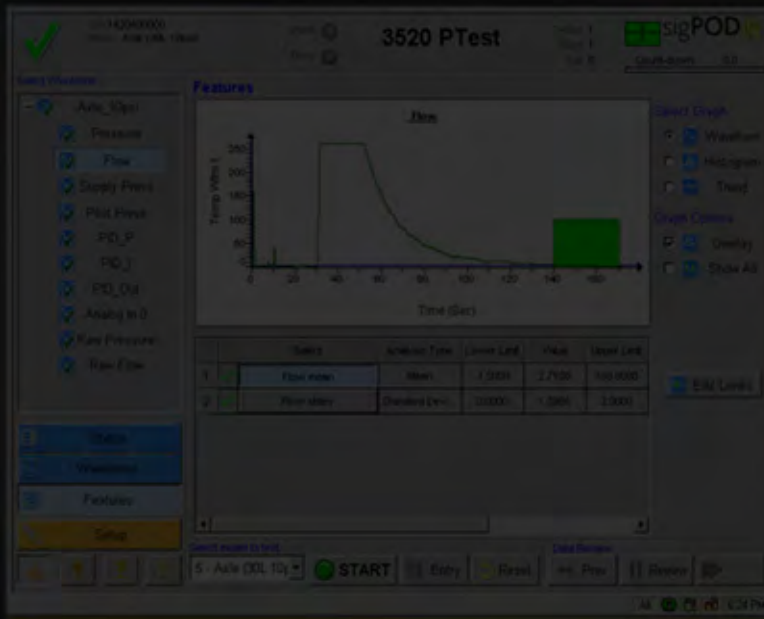


## Ordering Information

| Part Number     | Number of 3520 Series Leak Test Modules supported | AC power input (single phase, 50 or 60Hz) |  |
|-----------------|---|---|--|
| 40000-3670-1A00 | 1   | 120 VAC                                   |  |
| 40000-3670-1B00 | 1   | 220 VAC                                   | Wired for one sigPOD 1200 controller         |
| 40000-3670-2A00 | 2   | 120 VAC                                   |  |
| 40000-3670-2B00 | 2   | 220 VAC                                   |  |
| 40000-3670-3A00 | 3   | 120 VAC                                   |  |
| 40000-3670-3B00 | 3   | 220 VAC                                   | sigPOD and 3520 Series are priced separately |
| 40000-3670-4A00 | 4   | 120 VAC                                   |  |
| 40000-3670-4B00 | 4   | 220 VAC                                   |  |

**Additional options and customized versions are available; please contact your Sciemetric Representative for more information.**





**sciometric®**

[www.sciometric.com](http://www.sciometric.com)  
[inquiries@sciometric.com](mailto:inquiries@sciometric.com)  
 1-877-931-9200

© 2014 Sciometric Instruments, Inc. All brand and product names are trademarks or registered trademarks of their respective companies.  
 Products and specifications subject to change without notice.  
 Printed in Canada