

Sciometric EDGE 403 Interface and 414 Quad Carrier



Product Specifications

An expandable multi-channel solution for sophisticated measurements

Sciometric EDGE 403 Interface and Sciometric EDGE 414 Quad Carrier provide the expandable multi-channel data acquisition solution you have been waiting for. By stacking Sciometric EDGE 414 Quad Carriers you can power and connect up to 40 Sciometric EDGE modules in a single chassis, enabling the possibility for high channel count synchronous and asynchronous collections with one power connection and one network connection. Need one more channel? No problem!

Highlights

- 18-30 V power input at up to 6 A
- On/off switch with integrated breaker
- 1 Gbps Ethernet connection
- 4 Sciometric EDGE module slots per carrier
- Up to 10 carriers
- 12 left/right synchronization lines per carrier
- 6 synchronization lines per slot
- Real time clock access for all modules
- Hot swap modules
- Speed-controlled active cooling
- Replaceable fan module
- IP65-rated packaging
- Wall mount brackets (optional)



Sciometric EDGE 414 Quad Carrier with 403 Interface.

The Sciometric EDGE Platform

Sciometric EDGE is a universal industrial analytics platform to help you perfect your process in record time. This distributed data analytics system removes barriers to collecting data, driving productivity improvements and cost savings. The platform performs digital signal processing and signature analysis to offer in-depth insight into the performance, reliability, and repeatability of a broad range of applications.

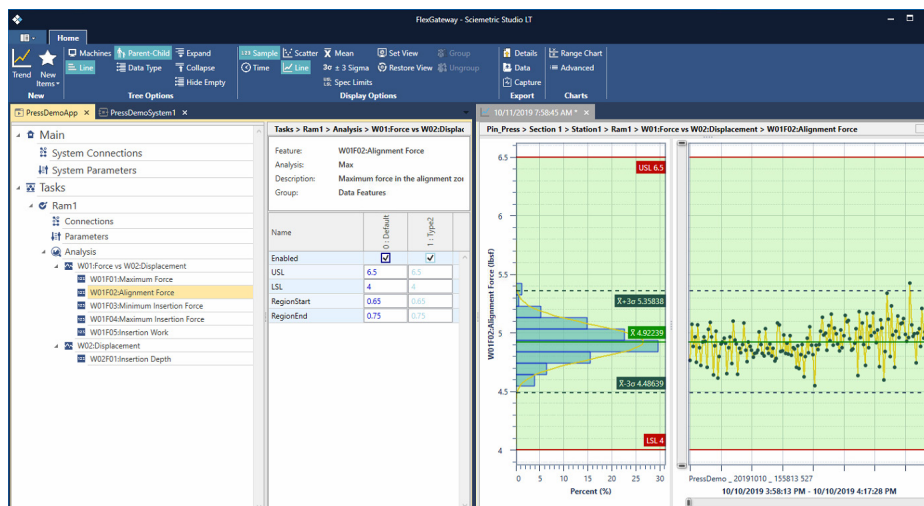
Processing, analytics and control functions are remotely configurable, giving you centralized management of your distributed operations. It provides industrial operations with a sophisticated, exciting, new way to monitor a process, perform real-time pass/fail analysis, and gain the visibility needed to optimize and control the overall process.



One tool for management, setup and analysis

Sciometric Studio offers comprehensive capabilities for monitoring and control of industrial applications. Manage Sciometric EDGE Systems through discovery, sensor calibration, application deployment, and software updates. Manage

applications through configuration of tasks, features, parameters and variants. Leverage continuous improvement through data-driven insight with analytics such as feature, waveform and image trending, correlations and statistical reports.



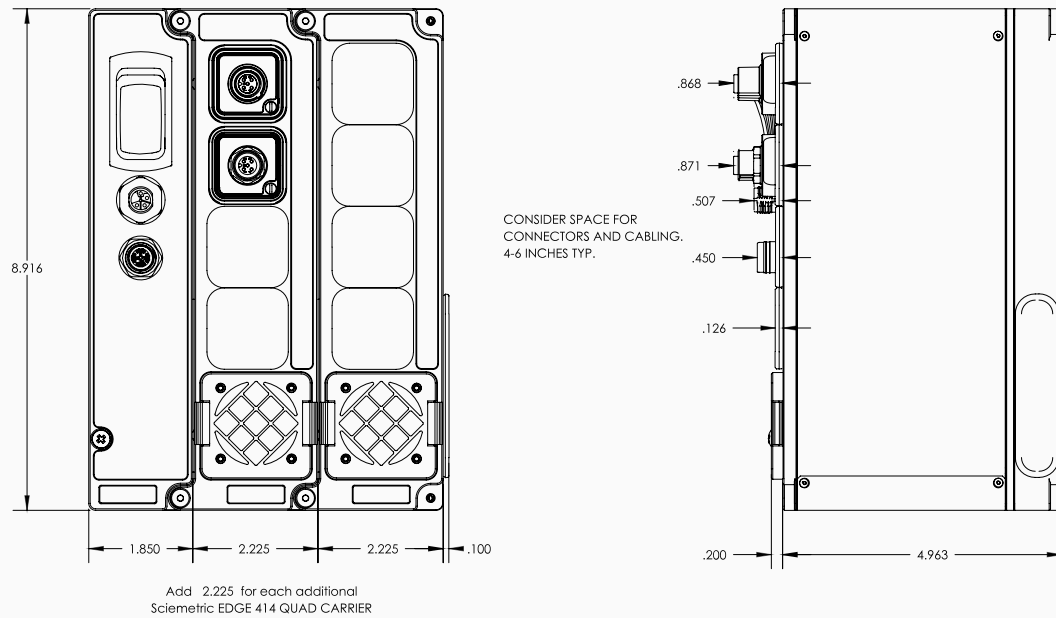
Technical Specifications

	403 Interface	414 Quad Carrier
Dimensions (HxWxD)	227 x 47 x 140 mm	227 x 57 x 132
Weight	1.2 kg	1.4 kg
Operating conditions	Humidity: 10-90% RH non-condensing (IEC 60068-2-56) Shock: 150 m/s per IEC 60068-2-27 Table A.2 Vibration: IEC 60068.2-65 Spectrum A.1 Category 3 Temperature: 0 ... 55 °C	
Pollution degree	2 maximum	
Maximum altitude	2000 m	
Approvals	CE, cNEMKOus	
Ingress protection	IP65	IP65, fan cavity IP40
Cooling	Fanless	IP65 speed-controlled user-replaceable fan module
Status indicators	Power, Network Link/Activity	RGB status, network Link/Activity
Power switch	Yes	—
Power input breaker	6 A @ 25 °C	—
Power input voltage	18-30 VDC	—
Network	10/100/1000 Mbps (X-code M12)	10/100/1000 to 403 X-code M12
Chassis ground lug	Yes	—
EDGE module slots	—	4 (12 VDC, 750 mA max, 100BASE-TX, hot swap, 6 sync lines, slot ID, fastener torque: 2-4 in-lbs)
Fan module slots	—	1
Synchronization bus	—	12 lines left 12 lines right 6 lines to each slot
Stackable	—	Yes – up to 10 carriers
Real time clock	Yes	(access to 403 clock)

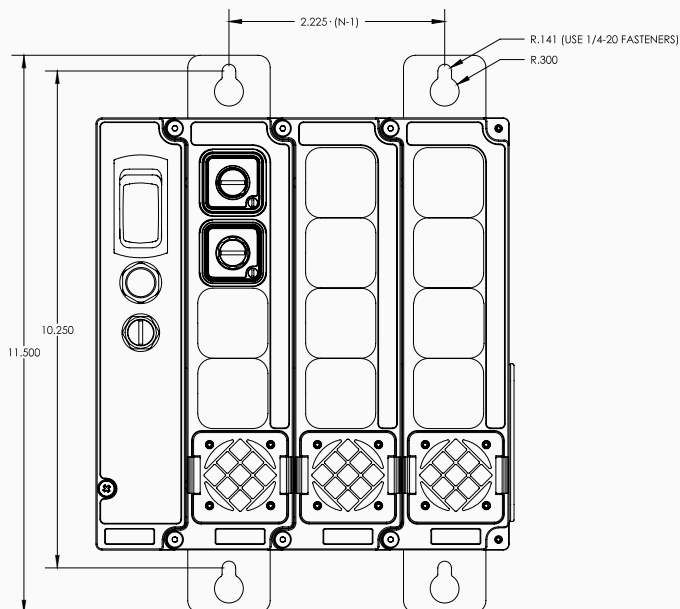
Mounting Information

The Sciometric EDGE 403 and Sciometric EDGE 414 come with desktop feet.
An optional wall mount bracket is available for fixed installations.







Dimensions



Optional Wall Mount Kit



Part Numbers

Item	Part number	Image
Sciometric EDGE 403 Interface with power connection, X-code M12 network connection and a single Sciometric Studio LT software license	10400-0403-0000	
Sciometric EDGE 414 Quad Carrier, with 4 Sciometric EDGE module slots, and 1 fan module slot, side-stackable up to 10 carriers (<i>modules to be purchased separately</i>)	10400-0414-0000	
Sciometric EDGE 414 wall mount kit (<i>includes two brackets, customer to supply their own 1/4" hardware to attach to wall</i>)	10400-AM01-0001	
X-code M12 plug to RJ45 plug cable	10400-AC0X-000n where n = 1, 2, 5 for 1 m, 2 m and 5 m lengths	
L-code M12 receptacle field wireable connector for 403 power connection	10400-APC1-0001	
Replacement 414 fan module	10400-AFAN-0000	
Sciometric EDGE 403 power supply (65 W)	10400-APSU-0065	